

Viola part

Tombeau de Couperin

Maurice Ravel

*arrangement for
flute, viola, and harp*
Jocelyn Morlock
(2006)

Viola

Le Tombeau de Couperin

I - Prélude

Maurice Ravel

arr. J. Morlock

Vif $\text{♩} = 92$

4 *pp* *arco* *pp* *mp* *pp*

8 *pp* *p*

13 *pp*

16 *p*

19 *pp* *mp*

24 *f* *ff* 1. *pizz. (??)*

34 2. *arco* *sf* *pp*

2 Viola

40 *sul tasto*

46 *ord.*

50 *pp*

53 *sul pont.*

59 *f*

63

66 *pp*

73 *(cresc.)*

78

(cresc.) *ff* *mf*

85

pp

88

pp

91

f *ppp*

Viola

II - Fugue

Allegro moderato ♩ = 84

9

13

18

23

27

31

pp

mf

f

p

pp

p

p

2 Viola

35 *pp*

40 *mf*

44 *pp* *mp*

48 *mf* *f*

52 *p*

56 *Rit.* *Meno allegro* *pp*

59 *Ral.* *Lent* *Ral.*

Viola

III - Forlane

Allegretto $\text{♩} = 96$

p

5

9

13 *mf* *pp*

20 *p*

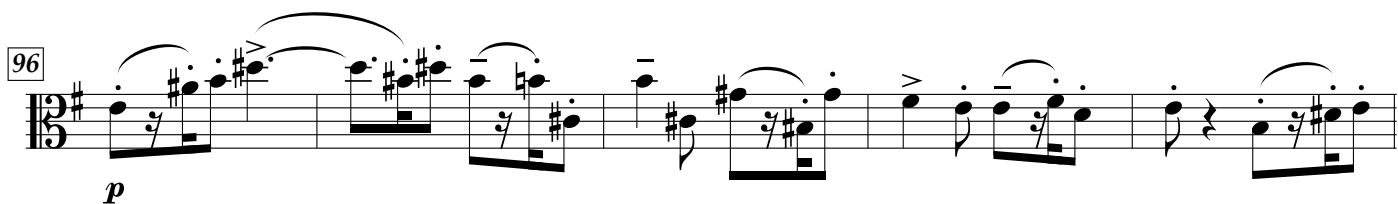
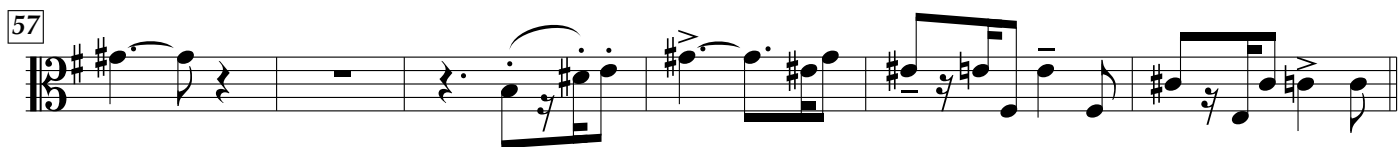
27 *pp* *sf* *sul D* *sul G*

33 *pp* *sf* *sul D* *sul G* 1. 2. *pp*

46 *pp* *sf* *sul D* *sul G* *sul D*

52 *sul G* 1. 2. *p*

2 Viola



106 *mf*

113 *pp* *p*

121 *p*

126

132 *pp* *p* *f*

138 *pp* *pp*

144 *p*

150 *pp*

156 *pp* *sans ralentir*

This musical score for Viola spans measures 106 to 156. It begins in 12/8 time with a key signature of one sharp (F#). The notation includes various musical symbols such as slurs, ties, and dynamic markings. The dynamics range from *pp* (pianissimo) to *f* (forte). A section of the score is marked *sans ralentir* (without slowing down). The score concludes with a double bar line at measure 156.

Viola

IV - Rigaudon

Assez vif $\text{♩} = 120$

5

10 *pizz.*

15 *(arco?) pizz.*

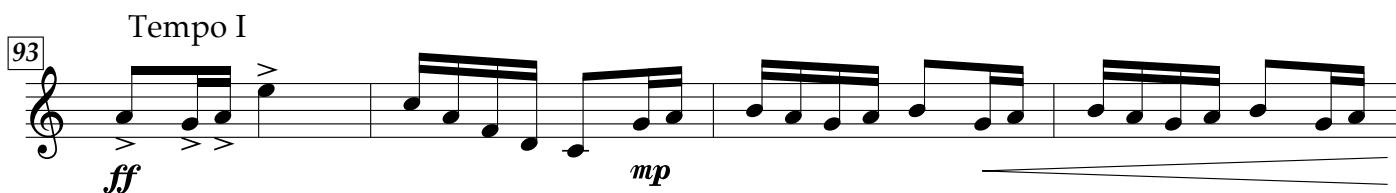
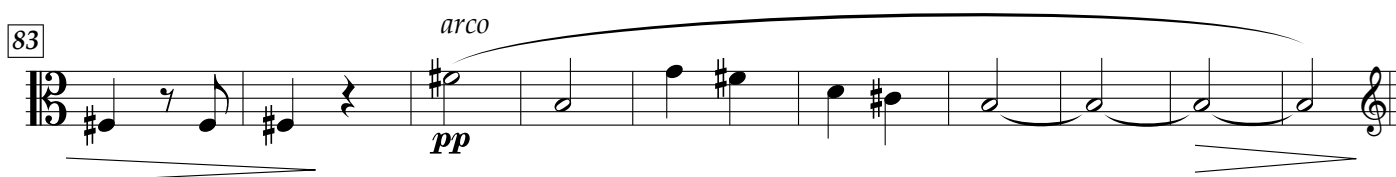
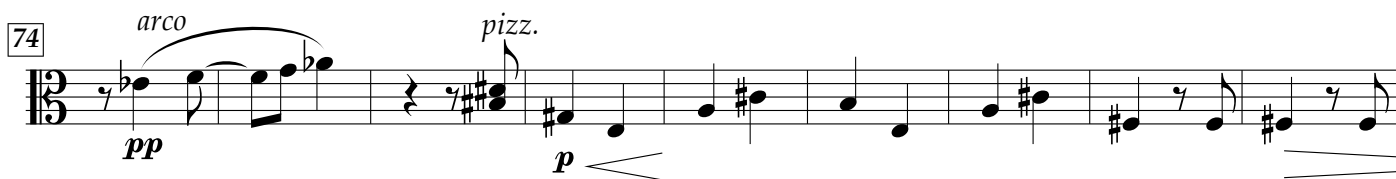
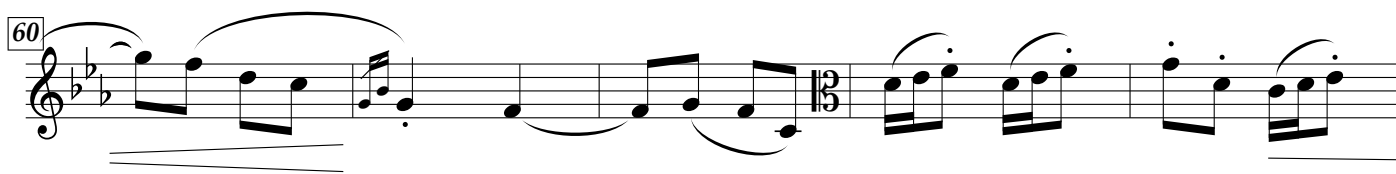
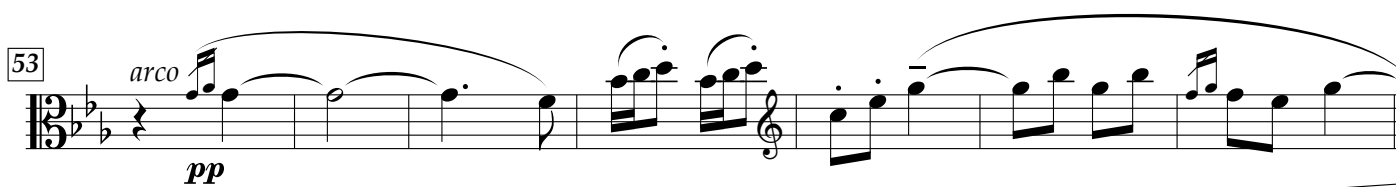
20 *(arco?) (pizz.)*
più f p

26

30 *arco f*

34 *ff*
Moins vif
pizz. pp

2 Viola



97 *ff*

102 *pizz.*

107 *(arco?) pizz.*

112 *(arco?) più f*

117 *pp*

121

125 *ff*

Viola

V - Menuet

Allegro moderato ♩ = 92

6

15

20

26

33

40

47

pp

mp

p

pizz.

Musette
arco, sul tasto

pp

sul D (ord.)

mf

ff

2 Viola

58 *poco dim.*

64 *pp*

73 *pp* *con sord.*

81 *pp* *mp*

92 *p* (senza sord.)

98 *pizz.* *arco* *pp*

105 *p* *poco cresc.* *mp*

111 *f* *mf*

121 *pp* *molto rall.* *con sord.*

VI - Toccata

Vif
pizz.

pp

7 *arco*

13

18

22 *pp*

26 *pp* *p*

30 *p*

34 *mp*

The musical score for Viola, VI - Toccata, is written in 2/4 time and D major. It begins with a 'Vif pizz.' instruction and a 'pp' dynamic. The first staff contains a series of eighth and sixteenth notes. The second staff, starting at measure 7, is marked 'arco' and continues the melodic line. Measures 13, 18, 22, 26, 30, and 34 are marked with measure rests. The score includes various musical notations such as eighth notes, sixteenth notes, and beams. There are also dynamic markings like 'pp', 'p', and 'mp'.

38 *mf* *pp*

43 *p*

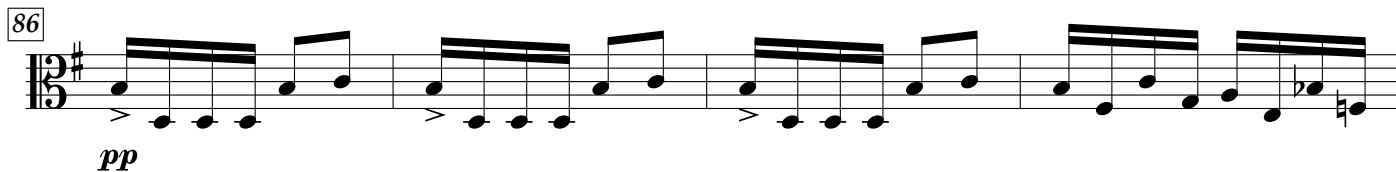
47 *f* *pizz.* *Un peu moins vif*

63 *soutenu* *Revenez au* *pp* *mp*

70 *1er Mouvt* *f*

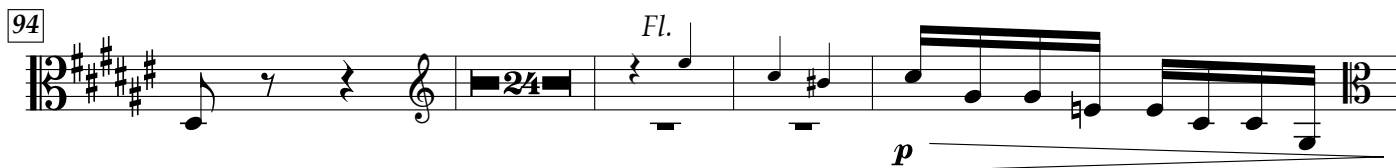
75 *ff*

4 Viola

86 

pp

90 

94 

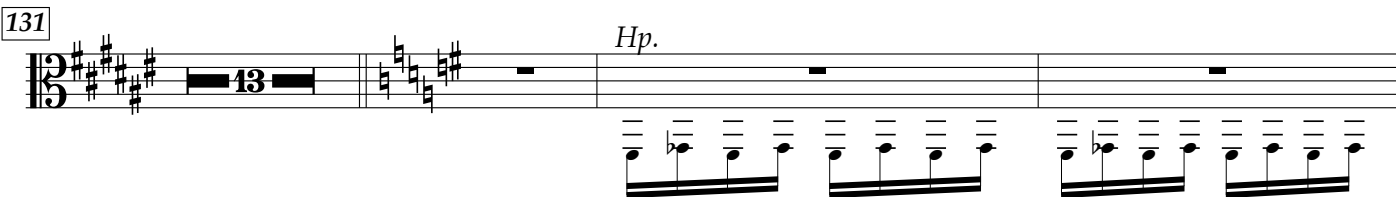
Fl.

p

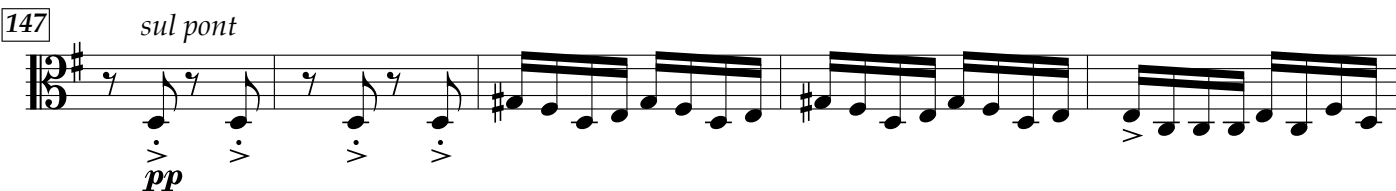
122 

pp

126 

131 

Hp.

147 

sul pont

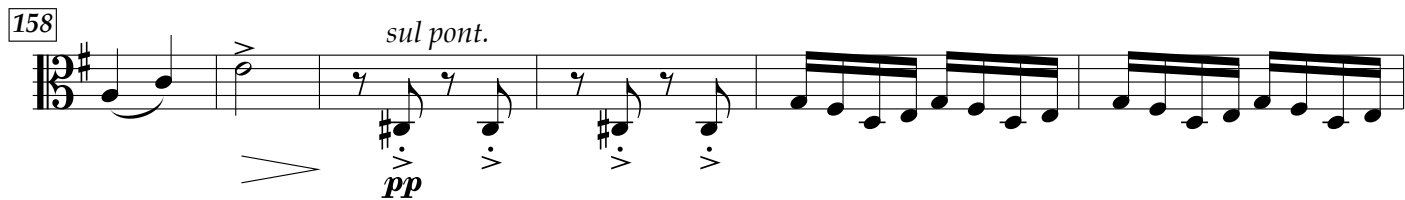
pp

152 

soutenu (normale)

p

158 *sul pont.*



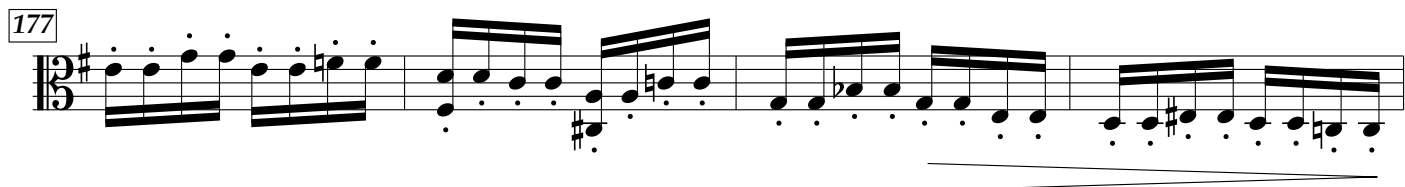
164



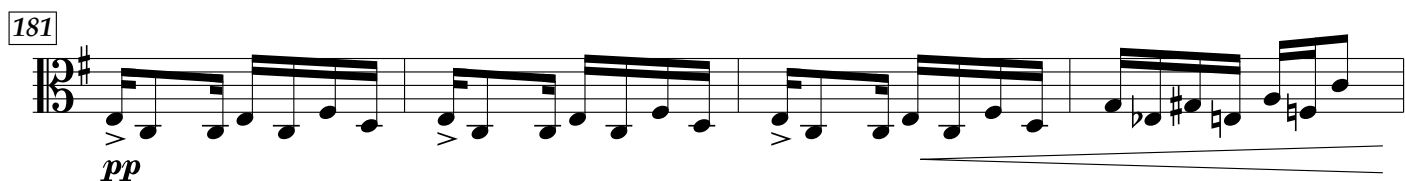
173 *normale*



177



181



185



189 *en dehors* *en augmentant peu à peu*



199 *plus f* *toujours plus f*

203 *ff*

207

213

218 *mp* *ff*

222

226

230

